



**Precision Plumbing Products**

*"Specify with Confidence - Install with Pride"*

**TEMP-DE TECH INSTALLATION INSTRUCTIONS**

Hot Water Shut-Down Valve Model: TSV-500TH

www.pppinc.net

**FUNCTION**

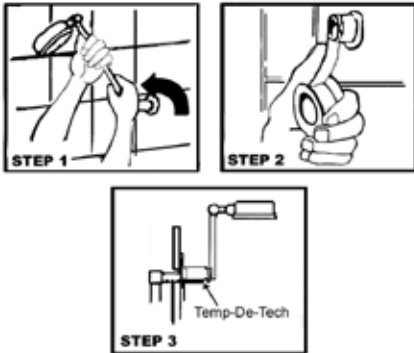
Storage hot water systems must deliver water at a minimum of 140°F. At this temperature it takes one second for a severe burn or scald to occur! Temp-de-Tech™ is designed to ensure water is delivered at a temperature of not more than 120°F, providing it is correctly installed and operated. The bath water cannot reach higher than this temperature, thereby protecting people from hot water burns. Its' quick shut-down action also assists in prevention of scalding should the hot tap be accidentally turned on.

**INSTALLATION INSTRUCTIONS – YOU WILL NEED PLUMBERS THREAD TAPE**

**Step 1** Ensure that the hot & cold bath taps are turned off. Remove the Shower fitting from the wall by turning it counter clockwise.

**Step 2** Apply the plumbers thread tape to seal the threads of your Temp-de-Tech™ & screw the Temp-de-Tech™ into the shower arm as shown below.

**Step 3** Apply plumbers thread tape to seal the threads of the wall connection & refit the shower arm onto the wall connection.



**OPERATION**

For normal operation, first turn on the cold water to achieve the desired flow rate, then introduce hot water until the preferred temperature is reached.

**TEST**

- When testing, ensure that no person is in the line of the flow of water.
- Have a strong flow of warm water pass through the spout, then close the cold tap & observe the water shut-down.

- Once the shut-down has occurred this product will reduce the flow of hot water to a trickle. This continuation of water flow is necessary to allow resetting to occur.
- It is recommended that this product be tested monthly.

**RESET**

- When Temp-de-Tech™ shuts down the hot water flow, turn off the hot tap, stand clear of the flow and open the cold tap. Temp-de-Tech™ will reset as soon as the hot water is purged from the pipes.
- Turn on the cold water to achieve the desired flow rate, then introduce hot water until the preferred temperature is reached.

**VALVE SPECIFICATION**

|                              |                   |
|------------------------------|-------------------|
| Hot water supply temperature | 185°F max         |
| Water supply pressure static | 200 psi max.      |
| Flow rate @ 73 psi:          |                   |
| Normal                       | greater than 6gpm |
| Shut-down                    | less than 0.1gpm  |
| Nominal Set temperature      | 120°F (+/- 3°F)   |
| Max. Operating Pressure      | 145 psi           |
| Min. Operating Pressure      | less than 1 psi   |

**WARNING**

- This product is designed to reduce the incidence of scalding, however hot water will trickle from the unit when shut-down occurs.
- Bath fittings fitted with this product should not be operated by children without parental supervision.
- This product may not operate properly if incorrectly installed.
- It is recommended that this product be replaced if test failure occurs.
- This product is not a substitute for Tempering Valve or Thermostatic Mixing Valve.
- This product is not suitable for use in Health Care Institutions.

**Proposition 65 Warning (for California Residents Only)**

This product contains a chemical known to the State of California to cause cancer, birth defects or other reproductive harm. **NOTE TO INSTALLER/CONTRACTOR:** California law requires this notice to be provided to the consumer/end user of this product.

ASSE 1062      Nominal Size 1/2"  
Direction of flow



**Precision Plumbing Products**

Division of JL Industries, Inc.



802 SE 199th Ave.  
Portland, Oregon 97233

T (503) 256-4010  
F (503) 253-8165

www.pppinc.net

JL Industries, Inc.



ASSE 1062 / NSF-61 / CSA B125

II TDT-01 Rev 03/06