



PRECISION HYDRONIC PRODUCTS
Wholesale Price Guide 05-20-2025

**802 SE 199th Avenue
Portland, OR 97233
Phone (503) 256-4010 • FAX (503) 253-8165
www.pppinc.net/price-list.html**

PRECISION HYDRONIC PRODUCTS 2024 - LIST PRICE SCHEDULE

1" Copper Manifolds w/Sweat Branch (2 1/2" Oc)

| Part Number | Description | \$ Price |
|---------------|------------------------------|----------|
| PHP-10002500 | 2 Loop 1" x 1/2" Plain Drop | 33.96 |
| PHP-10003500 | 3 Loop 1" x 1/2" Plain Drop | 41.34 |
| PHP-10006500 | 6 Loop 1" x 1/2" Plain Drop | 69.91 |
| PHP-100012500 | 12 Loop 1" x 1/2" Plain Drop | 120.89 |



1" Copper Manifolds w/PEX Barb (2 1/2" Oc)

| Part Number | Description | \$ Price |
|------------------|----------------------------|----------|
| PHP-10002500 PB | 2 Loop 1" x 1/2" PEX Barb | 35.45 |
| PHP-10003500 PB | 3 Loop 1" x 1/2" PEX Barb | 43.25 |
| PHP-10006500 PB | 6 Loop 1" x 1/2" PEX Barb | 72.83 |
| PHP-100012500 PB | 12 Loop 1" x 1/2" PEX Barb | 131.95 |



1" Copper Manifolds w/1/2" Ball Valve PEX Barb (2 1/2" Oc)

| Part Number | Description | \$ Price |
|--------------------|---|----------|
| PHP-10002500 PBBV | 2 Loop 1" x 1/2" Ball Valve w/PEX Barb | 75.73 |
| PHP-10003500 PBBV | 3 Loop 1" x 1/2" Ball Valve w/PEX Barb | 95.01 |
| PHP-10006500 PBBV | 6 Loop 1" x 1/2" Ball Valve w/PEX Barb | 177.25 |
| PHP-100012500 PBBV | 12 Loop 1" x 1/2" Ball Valve w/PEX Barb | 338.97 |



1" Copper Manifolds w/1/2" Compex Ball Valve (2 1/2" Oc)

| Part Number | Description | \$ Price |
|----------------------|-------------------------------------|----------|
| PHP-10002500 CPX3BV | 2 Loop 1" x 1/2" Compex Ball Valve | 93.48 |
| PHP-10003500 CPX3BV | 3 Loop 1" x 1/2" Compex Ball Valve | 130.65 |
| PHP-10006500 CPX3BV | 6 Loop 1" x 1/2" Compex Ball Valve | 170.81 |
| PHP-100012500 CPX3BV | 12 Loop 1" x 1/2" Compex Ball Valve | 482.48 |



1 1/4" Copper Manifolds w/3/4" Ball Valve PEX Barb (4" Oc)

| Part Number | Description | \$ Price |
|-------------------|--|----------|
| PHP-12502750 PBBV | 2 Loop 1 1/4" x 3/4" Ball Valve w/PEX Barb | 123.57 |
| PHP-12503750 PBBV | 3 Loop 1 1/4" x 3/4" Ball Valve w/PEX Barb | 178.63 |
| PHP-12504750 PBBV | 4 Loop 1 1/4" x 3/4" Ball Valve w/PEX Barb | 233.75 |



1" X 1/2" PEX Barb ftg., A Belled & A Spun Closed End (2" Ctrs)

| Part Number | Description | \$ Price |
|----------------|---|----------|
| PHP-1003 SBPB | 3 Loop 1" x 1/2 Pex Barb ftg, Belled & Spun Clsd End | 44.25 |
| PHP-1004 SBPB | 4 Loop 1" x 1/2 Pex Barb ftg, Belled & Spun Clsd End | 52.32 |
| PHP-1005 SBPB | 5 Loop 1" x 1/2 Pex Barb ftg, Belled & Spun Clsd End | 62.82 |
| PHP-1006 SBPB | 6 Loop 1" x 1/2 Pex Barb ftg, Belled & Spun Clsd End | 71.25 |
| PHP-1007 SBPB | 7 Loop 1" x 1/2 Pex Barb ftg, Belled & Spun Clsd End | 80.19 |
| PHP-1008 SBPB | 8 Loop 1" x 1/2 Pex Barb ftg, Belled & Spun Clsd End | 94.09 |
| PHP-1009 SBPB | 9 Loop 1" x 1/2 Pex Barb ftg, Belled & Spun Clsd End | 96.14 |
| PHP-10010 SBPB | 10 Loop 1" x 1/2 Pex Barb ftg, Belled & Spun Clsd End | 106.49 |
| PHP-10012 SBPB | 12 Loop 1" x 1/2 Pex Barb ftg, Belled & Spun Clsd End | 124.94 |



1" X 1/2" PEX Barb ftg., Reduced Ends w/3/4" PEX Barb ftg. (2" Ctrs)

| Part Number | Description | \$ Price |
|----------------|--|----------|
| PHP-1003 N2PB | 3 Loop 1" x 1/2 Pex Barb ftg, Reduced Ends w/3/4" PEX Barb ftg. | 51.91 |
| PHP-1004 N2PB | 4 Loop 1" x 1/2 Pex Barb ftg, Reduced Ends w/3/4" PEX Barb ftg. | 61.38 |
| PHP-1005 N2PB | 5 Loop 1" x 1/2 Pex Barb ftg, Reduced Ends w/3/4" PEX Barb ftg. | 69.67 |
| PHP-1006 N2PB | 6 Loop 1" x 1/2 Pex Barb ftg, Reduced Ends w/3/4" PEX Barb ftg. | 78.45 |
| PHP-1007 N2PB | 7 Loop 1" x 1/2 Pex Barb ftg, Reduced Ends w/3/4" PEX Barb ftg. | 87.31 |
| PHP-1008 N2PB | 8 Loop 1" x 1/2 Pex Barb ftg, Reduced Ends w/3/4" PEX Barb ftg. | 100.87 |
| PHP-1009 N2PB | 9 Loop 1" x 1/2 Pex Barb ftg, Reduced Ends w/3/4" PEX Barb ftg. | 102.78 |
| PHP-10010 N2PB | 10 Loop 1" x 1/2 Pex Barb ftg, Reduced Ends w/3/4" PEX Barb ftg. | 113.01 |
| PHP-10012 N2PB | 12 Loop 1" x 1/2 Pex Barb ftg, Reduced Ends w/3/4" PEX Barb ftg. | 131.11 |



PRECISION HYDRONIC PRODUCTS 2024 - LIST PRICE SCHEDULE

1" X 1/2" PEX Barb fgt., Reduced Ends w/3/4" PEX Barb fgt. (2" Ctrs)



| Part Number | Description | \$ Price |
|------------------|--|----------|
| PHP-1003 N2PBBV | 3 Loop 1" x 1/2 Pex Barb Ball Valve fgt, Ends Reduced w/3/4" PEX Barb Ftg | 103.54 |
| PHP-1004 N2PBBV | 4 Loop 1" x 1/2 Pex Barb Ball Valve fgt, Ends Reduced w/3/4" PEX Barb Ftg | 130.16 |
| PHP-1005 N2PBBV | 5 Loop 1" x 1/2 Pex Barb Ball Valve fgt, Ends Reduced w/3/4" PEX Barb Ftg | 155.70 |
| PHP-1006 N2PBBV | 6 Loop 1" x 1/2 Pex Barb Ball Valve fgt, Ends Reduced w/3/4" PEX Barb Ftg | 181.53 |
| PHP-1007 N2PBBV | 7 Loop 1" x 1/2 Pex Barb Ball Valve fgt, Ends Reduced w/3/4" PEX Barb Ftg | 207.61 |
| PHP-1008 N2PBBV | 8 Loop 1" x 1/2 Pex Barb Ball Valve fgt, Ends Reduced w/3/4" PEX Barb Ftg | 237.48 |
| PHP-1009 N2PBBV | 9 Loop 1" x 1/2 Pex Barb Ball Valve fgt, Ends Reduced w/3/4" PEX Barb Ftg | 265.57 |
| PHP-10010 N2PBBV | 10 Loop 1" x 1/2 Pex Barb Ball Valve fgt, Ends Reduced w/3/4" PEX Barb Ftg | 284.93 |
| PHP-10012 N2PBBV | 12 Loop 1" x 1/2 Pex Barb Ball Valve fgt, Ends Reduced w/3/4" PEX Barb Ftg | 334.53 |

1" X 1/2" PEX Barb Ball Valve, One Belled & One Spun Closed End (2" Ctrs)



| Part Number | Description | \$ Price |
|------------------|--|----------|
| PHP-1003 SBPBBV | 3 Loop 1" x 1/2 Pex Barb Ball Valve fgt, Belled & Spun Clsd End | 96.71 |
| PHP-1004 SBPBBV | 4 Loop 1" x 1/2 Pex Barb Ball Valve fgt, Belled & Spun Clsd End | 123.93 |
| PHP-1005 SBPBBV | 5 Loop 1" x 1/2 Pex Barb Ball Valve fgt, Belled & Spun Clsd End | 149.82 |
| PHP-1006 SBPBBV | 6 Loop 1" x 1/2 Pex Barb Ball Valve fgt, Belled & Spun Clsd End | 176.33 |
| PHP-1007 SBPBBV | 7 Loop 1" x 1/2 Pex Barb Ball Valve fgt, Belled & Spun Clsd End | 202.78 |
| PHP-1008 SBPBBV | 8 Loop 1" x 1/2 Pex Barb Ball Valve fgt, Belled & Spun Clsd End | 234.12 |
| PHP-1009 SBPBBV | 9 Loop 1" x 1/2 Pex Barb Ball Valve fgt, Belled & Spun Clsd End | 253.76 |
| PHP-10010 SBPBBV | 10 Loop 1" x 1/2 Pex Barb Ball Valve fgt, Belled & Spun Clsd End | 281.61 |
| PHP-10012 SBPBBV | 12 Loop 1" x 1/2 Pex Barb Ball Valve fgt, Belled & Spun Clsd End | 335.15 |

1" X 1/2" PEX Barb fgt., Spun Closed and Reduced End w/3/4" PEX Barb fgt. (2" Ctrs)



| Part Number | Description | \$ Price |
|----------------|---|----------|
| PHP-1003 SNPB | 3 Loop 1" x 1/2 Pex Barb fgt, Spun Clsd & Reduced End w/3/4" PEX Barb fgt. | 47.30 |
| PHP-1004 SNPB | 4 Loop 1" x 1/2 Pex Barb fgt, Spun Clsd & Reduced End w/3/4" PEX Barb fgt. | 56.73 |
| PHP-1005 SNPB | 5 Loop 1" x 1/2 Pex Barb fgt, Spun Clsd & Reduced End w/3/4" PEX Barb fgt. | 64.95 |
| PHP-1006 SNPB | 6 Loop 1" x 1/2 Pex Barb fgt, Spun Clsd & Reduced End w/3/4" PEX Barb fgt. | 73.82 |
| PHP-1007 SNPB | 7 Loop 1" x 1/2 Pex Barb fgt, Spun Clsd & Reduced End w/3/4" PEX Barb fgt. | 82.70 |
| PHP-1008 SNPB | 8 Loop 1" x 1/2 Pex Barb fgt, Spun Clsd & Reduced End w/3/4" PEX Barb fgt. | 96.10 |
| PHP-1009 SNPB | 9 Loop 1" x 1/2 Pex Barb fgt, Spun Clsd & Reduced End w/3/4" PEX Barb fgt. | 98.19 |
| PHP-10010 SNPB | 10 Loop 1" x 1/2 Pex Barb fgt, Spun Clsd & Reduced End w/3/4" PEX Barb fgt. | 111.29 |
| PHP-10012 SNPB | 12 Loop 1" x 1/2 Pex Barb fgt, Spun Clsd & Reduced End w/3/4" PEX Barb fgt. | 126.55 |

1" X 1/2" PEX Barb Ball Valve, Spun Closed and Reduced End w/3/4" PEX Barb fgt. (2" Ctrs)



| Part Number | Description | \$ Price |
|------------------|--|----------|
| PHP-1003 SNPBBV | 3 Loop 1" x 1/2 Pex Barb Ball Valve, Spun Clsd & Reduced End w/3/4" PEX Barb fgt. | 98.86 |
| PHP-1004 SNPBBV | 4 Loop 1" x 1/2 Pex Barb Ball Valve, Spun Clsd & Reduced End w/3/4" PEX Barb fgt. | 125.53 |
| PHP-1005 SNPBBV | 5 Loop 1" x 1/2 Pex Barb Ball Valve, Spun Clsd & Reduced End w/3/4" PEX Barb fgt. | 150.06 |
| PHP-1006 SNPBBV | 6 Loop 1" x 1/2 Pex Barb Ball Valve, Spun Clsd & Reduced End w/3/4" PEX Barb fgt. | 176.93 |
| PHP-1007 SNPBBV | 7 Loop 1" x 1/2 Pex Barb Ball Valve, Spun Clsd & Reduced End w/3/4" PEX Barb fgt. | 202.98 |
| PHP-1008 SNPBBV | 8 Loop 1" x 1/2 Pex Barb Ball Valve, Spun Clsd & Reduced End w/3/4" PEX Barb fgt. | 233.75 |
| PHP-1009 SNPBBV | 9 Loop 1" x 1/2 Pex Barb Ball Valve, Spun Clsd & Reduced End w/3/4" PEX Barb fgt. | 252.97 |
| PHP-10010 SNPBBV | 10 Loop 1" x 1/2 Pex Barb Ball Valve, Spun Clsd & Reduced End w/3/4" PEX Barb fgt. | 280.31 |
| PHP-10012 SNPBBV | 12 Loop 1" x 1/2 Pex Barb Ball Valve, Spun Clsd & Reduced End w/3/4" PEX Barb fgt. | 332.90 |

72" Copper Heating Manifolds x 24 Drop (3" Oc)

| Part Number | Description | \$ Price |
|--------------------|---|----------|
| PHP-100024500 PBBV | 24 Loop 1" x 1/2" PEX Barb w/Ball Valve | 682.77 |
| PHP-100024500 PB | 24 Loop 1" x 1/2" PEX Barb | 254.05 |
| PHP-100024500 | 24 Loop 1" x 1/2" Plain Drop | 256.44 |
| PHP-100024750 | 24 Loop 1" x 3/4" Plain Drop | 294.39 |
| PHP-125024500 | 24 Loop 1 1/4" x 1/2" Plain Drop | 349.67 |
| PHP-125024750 | 24 Loop 1 1/4" x 3/4" Plain Drop | 381.31 |
| PHP-150024750 | 24 Loop 1 1/2" x 3/4" Plain Drop | 465.96 |
| PHP-200024750 | 24 Loop 2" x 3/4" Plain Drop | 619.46 |
| PHP-2000241000 | 24 Loop 2" x 1" Plain Drop | 645.61 |

72" Copper Heating Manifolds x 18 Drop (4" Oc)

| Part Number | Description | \$ Price |
|-----------------|----------------------------------|----------|
| PHP-100018750-4 | 18 Loop 1" x 3/4" Plain Drop | 256.17 |
| PHP-125018750-4 | 18 Loop 1 1/4" x 3/4" Plain Drop | 333.73 |
| PHP-150018750-4 | 18 Loop 1 1/2" x 3/4" Plain Drop | 407.18 |
| PHP-200018750-4 | 18 Loop 2" x 3/4" Plain Drop | 571.88 |

72" Copper Heating Manifolds x 12 Drop (6" Oc)

| Part Number | Description | \$ Price |
|-----------------|----------------------------------|----------|
| PHP-100012750-6 | 12 Loop 1" x 3/4" Plain Drop | 218.01 |
| PHP-125012750-6 | 12 Loop 1 1/4" x 3/4" Plain Drop | 286.07 |
| PHP-150012750-6 | 12 Loop 1 1/2" x 3/4" Plain Drop | 363.29 |
| PHP-200012750-6 | 12 Loop 2" x 3/4" Plain Drop | 524.31 |

End Piece and Air Vent Ports 1/8" & 3/8"

| Part Number | Description | \$ Price |
|--------------------|--|----------|
| PHP-1000125 EP | 1" x 1/8" End Piece | 29.28 |
| PHP-1000375 EP | 1" x 3/8" End Piece | 29.28 |
| PHP-1250125 EP | 1 1/4" x 1/8" End Piece | 44.25 |
| PHP-1250375 EP | 1 1/4" x 3/8" End Piece | 44.25 |
| PHP-1500125 EP | 1 1/2" x 1/8" End Piece | 51.96 |
| PHP-1500375 EP | 1 1/2" x 3/8" End Piece | 51.96 |
| PHP-1000125-500 EP | 1" x 1/8" ftg x 1/2" ftg End Piece | 37.92 |
| PHP-1250125-500 EP | 1 1/4" x 1/8" ftg x 1/2" ftg End Piece | 56.37 |
| PHP-1500125-500 EP | 1 1/2" x 1/8" ftg x 1/2" ftg End Piece | 61.19 |
| PHP-2000125-500 EP | 2" x 1/8" ftg x 1/2" ftg End Piece | 76.28 |

**Thermostatic Mixing Valves**

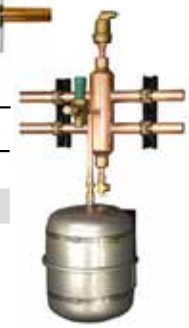
| Part Number | Description | \$ Price |
|-------------|--------------------------------------|----------|
| PHP-TMV500 | Sweat 1/2" Thermostatic Mixing Valve | 312.12 |
| PHP-TMV750 | Sweat 3/4" Thermostatic Mixing Valve | 312.12 |
| PHP-TMV1000 | Sweat 1" Thermostatic Mixing Valve | 312.12 |

**Mini-Sep™ - Includes Air Vent, Fast-Fill Pressure-Reducing Valve**

| Part Number | Description | \$ Price |
|---------------|------------------|----------|
| PHP-MSEP-1000 | 1" Mini-Sep™ | 1,179.06 |
| PHP-MSEP-1250 | 1 1/4" Mini-Sep™ | 1,347.49 |

**Mini-Sep Plus™ - Includes Air Vent, Fast-Fill Pressure-Reducing Valve, Expansion Tank, Mounting Bracket**

| Part Number | Description | \$ Price |
|-------------------|-----------------------|----------|
| PHP-MSEPPLUS-1000 | 1" Mini-Sep Plus™ | 1,770.14 |
| PHP-MSEPPLUS-1250 | 1 1/4" Mini-Sep Plus™ | 1,949.29 |



FOR INFORMATION OR A QUOTE, CALL (503) 256-4010
www.pppinc.net/price-list.html

802 SE 199th Ave., Portland, Oregon 97233
FAX: (503) 253-8165

Rev A 04-25