



Precision Plumbing Products
"Specify with Confidence - Install with Pride"

LEAD FREE

PO-500 PRESSURE DROP ACTIVATED TRAP PRIMER SUBMITTAL

www.pppinc.net

The PO-500, Oregon #1 automatic pressure drop activated trap primer valve will prime 1 to 4 floor drains with our patented distribution units, the DU-U or DU-4.

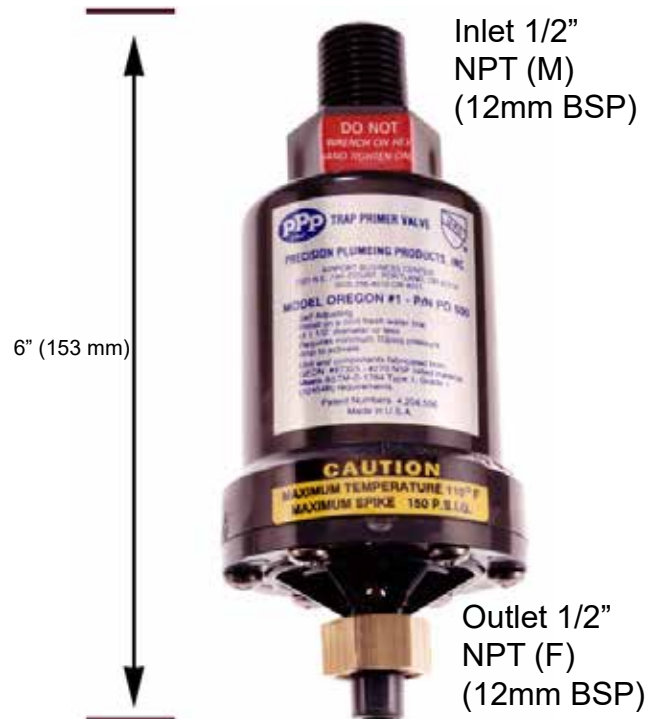
System operating range is 20 psi minimum to 80 psi (138 to 552 kpa) maximum.

The valve requires a 10 psi (70 kpa) pressure drop across the valve to activate and will deliver a metered amount of water to the floor drain. Trap primer is to be connected to a cold water supply only.

Constructed composite body, Santoprene 111-45 diaphragm, #60 stainless steel mesh screen.

NO Adjustment Required!

PART NO: PO-500



"OREGON #1" Floor Drain Trap Primer Valve Components

SPECIFICATIONS

Body, Check Valve Retainer Plate, Float (Polypropylene), cover.

Material Specification

- Geon PVC M-1000 Type 1, Grade 1 molding compound. NSF listed material #270
- Check Valve Ball #316 - Stainless Steel
- Check Valve Ball Retainer Monel Metal
- Cover Screws (6) 5/8" x 10/24" Stainless Steel
- Slip Joint Nut - 1/2" NPT Chrome Plated Brass
- Slip Joint Nut Washer - Neoprene Strainer 40 Mesh - Stainless Steel Wire Cloth

PROJECT SUBMITTAL MODEL # _____

Project: _____

Contractor: _____

Engineer: _____

Date Submitted: _____

Prepared By: _____

INSTALLATION REQUIREMENTS

This valve is designed to be installed on 1/2" to 1 1/2" cold water line, feeding a flush valve or other open and closing valve supply line that is frequently used.

Trap Primer valve makeup line to floor drain is recommended to be a minimum of 12" off the finished floor before a 90° elbow can be installed.

The furthest recommended distance of makeup line is 20' to the floor drain.

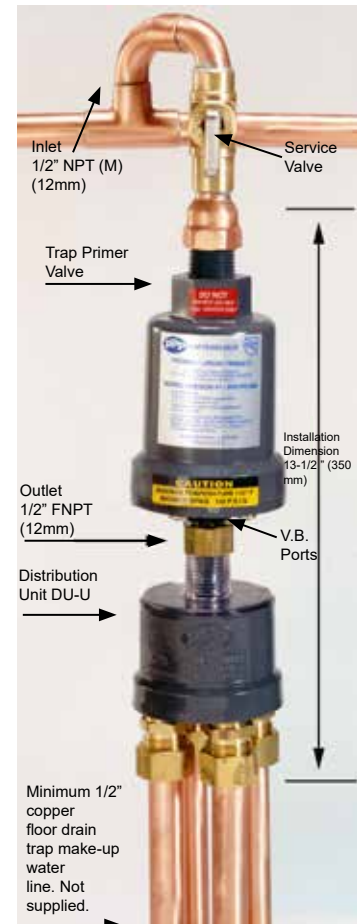
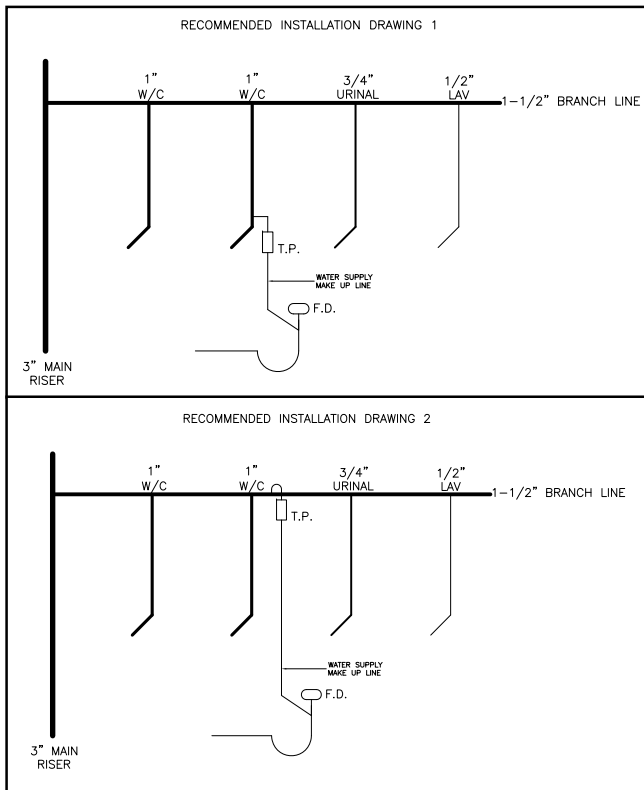
Trap primer make up line must have continuous slope to the floor drain (consult local code requirements).

Install with a shut off valve for servicing on the inlet side and a union connection on the outlet side.

The valve must be installed level.

If using the distribution unit the clear plastic cover must be used.

Do not subject the valve to rough in pressure test.



NOTE: Consult plumbing inspector prior to installing distribution units.

Precision Plumbing Products

Division of JL Industries, Inc.

802 SE 199th Ave
Portland, Oregon 97233

T (503) 256-4010
F (503) 253-8165

www.pppinc.net



JL Industries, Inc.

